

# **Aura Inc.**

*“Process Control – Building the Core”*

## **Aura Thermal Sensor & Instrumentation Accessories**



**ISO 9001:2000**

[www.aurainc.com](http://www.aurainc.com)

# **CONTENTS**

## **SECTION I**

### **INTRODUCTION**

ABOUT US  
OVERVIEW

## **SECTION II**

### **THERMAL SENSOR ACCESSORIES**

#### **THERMOWELLS**

GENERAL SPECIFICATIONS  
STANDARD STEPPED WELLS  
STANDARD STEPPED WELLS WITH LAG EXTENSION  
LIMITED SPACE THERMOWELLS

#### **SENSOR HOUSING AND PROTECTION TUBES**

CLOSED END TUBE HOUSINGS

#### **BORE THROUGH COMPRESSION FITTINGS**

316SS BORE THROUGH COMPRESSION FITTINGS  
BRASS BORE THROUGH COMPRESSION FITTING

#### **THERMOCOUPLE HEAD FITTINGS**

STRAIGHT THRU BORE 1/2" NPT X 1/2" NPT FITTINGS  
OPEN END BORE 1/2" NPT X 1/2" NPT FITTINGS  
SPRING LOAD TYPE 1/2" NPT X 1/2" NPT FITTINGS  
BRAZING POTTING PLUGS

#### **TRANSITIONS**

STANDARD TRANSITIONS WITH THREADS  
STANDARD TRANSITIONS WITHOUT THREADS

#### **BAYONET FITTINGS**

LOCK CAPS  
BAYONET ADAPTORS

**MISCELLANEOUS FITTINGS**

MELT BOLTS

WELD PADS

STRAIN RELIEF SPRINGS

**SECTION III**

**INSTRUMENTATION ACCESSORIES**

AIR DISTRIBUTION MANIFOLD

TRANSMITTER OVAL FLANGES

BARREL SYPHONS

SNUBBERS

REDUCING BUSHES

**SECTION IV**

**QUALITY**

TOTAL QUALITY PROGRAM

TYPICAL QUALITY PLAN

**SECTION V**

**CERTIFICATES**

ISO CERTIFICATE

**SECTION I  
INTRODUCTION**

**ABOUT US  
OVERVIEW**

Aura designs , manufactures and provides Fluid Connectors, Needle Valves, Instrument Manifolds, RTD/Thermocouple sensors and it's associated accessories. **Aura** was founded in **1995** in **India** with a 100% owned subsidiary in the **United States**. Our customers range in size and scope across the globe : from upstream to down stream oil and gas refinery, Petrochemical complexes, Major Power and Utility companies, Biotech and Food Processing, Fertilizer and Chemicals, HVAC, Temperature and Pressure sensor OEM's. Our 100% owned **state of the art manufacturing** facilities in New Delhi – India spans 8000 square feet and uses **CNC** machines, Lathe, Traub and other special purpose machines to produce high precision products and “**custom built** “ parts and has been **ISO 9001:2000** compliant since 2001 as certified by TUV Germany.

At Aura our **mission** is clear and unequivocal: to help our clients gain and sustain competitive advantage. We accomplish this goal through a continuous process of innovation and maintaining complete control of the entire supply chain: in house manufacturing and our owned warehousing and distribution in the United States and India. Complementing this we have our extensive network of distributors in Europe, Africa and Asia which allows us to service clients on the ground.

Our products meet almost all global standards and conform to **BS 4368 Part IV**, Alberta Boiler Safety Association (**ABSA**), Technical Safety and Standards Authority (**TSSA** )- Canada to name a few.

We service more than **145 clients** in the United States and Canada since 1997 and a proud list of clients in India, Europe and Middle East. Major approvals include: EIL, NTPC, BHEL, PDIL, Emerson, Yokogawa, ABB, Honeywell, Western Gauge, Gulf Petroleum, Aramco - Al Khaliji Joint Venture, Bangladesh Gas, Siirtec Nigi, Pyromation, to name a few.

Our Good Manufacturing Practices cover quality systems for design, manufacturing, packaging, labeling, storage, installation and shipping. At Aura we follow a **100% QA** procedure in that no parts are shipped without inspection and that all raw material are 3<sup>rd</sup> party spectrographic tested for specification. With Material tracing, internal stage wise documentation, web based order tracking systems, we have automated our supply chain and the effort persists.

Our management team has built three successful enterprises. We have hundreds of years of corporate experience at ABB, Yokogawa Electric Corporation, Emerson, Jacobs, Foster Wheeler, Rockwell Automation. Internally, we respect our talented personnel and their creative spirits and love them like our own family. We've learnt that greatest successes are achieved when vision and execution work hand in hand and that **personal** touch must always take priority over procedures when it comes to **customer service**. These virtues allows us to compete and stand tall against much larger global rivals and attain yet another year of stellar performance. Our dual development approach : leveraging facilities across multiple locations and time zones helps us achieve a 24x7 solution.

## AN OVERVIEW

Aura have been a pioneer in manufacture of instrumentation accessories. While the main focus has been on accessories and parts for Thermal Sensors, we also make accessories for other instrumentation applications

### THERMAL SENSOR ACCESSORIES

- **THERMOWELLS**

The Aura range of thermowells include all standard thermowells like Standard Threaded Stepped, Standard Threaded Tapered, Lagging Extension, Weld In, Socket Weld, Limited Space, Industrial Glass Thermometer Thermowells , two piece Fabricated Thermowells for low pressure applications like HVAC etc.

- **SENSOR HOUSINGS**

Aura manufactures a very wide range of housings for sensors . They consist of but are not limited to Closed End tubes, Closed End Tubes with Threaded Hex Head Fittings, Mini machined Thermowells, Closed end tubes with round / square flanges , Air and Gas Service Housings with slots / holes on the housing walls, 'Banjo' style housings, Meat Probe Housings etc.

- **BORE THROUGH COMPRESSION FITTINGS.**

Either fixed or adjustable type. Standard materials are 316 SS and Brass, available in other materials. Standard Ferrules are 316 SS , PTFE, Nylon .OD sizes are 1/16" to 1/2" OD and NPT Process connections are 1/16" to 1/2". Both Male and Female threads available.

- **THERMOCOUPLE HEAD FITTINGS**

Standard material is 316 SS, also available in 304 SS and brass. Available in Straight Through Bore, Open End Bore and Spring Load styles. Our specialty is custom built fittings. Brazing / Potting plugs in a variety of size / thread combinations.

- **TRANSITIONS**

With or without threads. 304 SS standard material. Available in other materials.

- **BAYONET FITTINGS**

Lock caps for use with flexible armor as well as standard tubes. Bayonet adaptors in 304 SS and CS of various threads and lengths.

- **MISCELLANEOUS FITTINGS**

- Melt bolts that are mainly used in the plastics industry . 3" , 4" 6" and 9" standard lengths. Available as blank bolts and also with set screws for flexible armor.
- Weld Pads for use with surface temperature measurement elements. Both flat and curved. 1/8", 3/16" and 1/4" .
- Strain Relief Springs

### **INSTRUMENTATION ACCESSORIES**

- **AIR DISTRIBUTION HEADERS**

For distribution of instrument air to individual instruments . Machined from solid barstock. Standard configuration is 6 way, 10 way and 14 way. Available with either Needle Valves or Ball Valves.

- **SNUBBERS**

Provides surge protection for pressure gauges. Porous filter design suitable for air and gas as well as liquid services. Available in 316 SS or brass. Filter elements are 316L

- **BARREL SYPHONS**

Robust design barrel siphons in 316 SS

- **TRANSMITTER OVAL FLANGES.**

Used to connect process piping to transmitters and valve manifolds. Available in 316 SS or Carbon Steel. Standard process connection is 1/2" NPTF.

- **REDUCING BUSHES**

Useful interconnection interface for various types of process connections. Available in 316 SS as standard



## **SECTION II**

### **THERMAL SENSOR ACCESSORIES**

#### **THERMOWELLS**

GENERAL SPECIFICATION  
STANDARD STEPPED WELLS  
STANDARD STEPPED WELLS WITH LAGGING EXTENSION  
LIMITED SPACE THERMOWELLS

#### **SENSOR HOUSING AND PROTECTION TUBES**

CLOSED END TUBE HOUSINGS

#### **BORE THROUGH COMPRESSION FITTINGS**

316SS BORE THROUGH COMPRESSION FITTINGS  
BRASS BORE THROUGH COMPRESSION FITTINGS

#### **THERMOCOUPLE HEAD FITINGS**

STRAIGHT THROUGH BORE 1/2" NPT x 1/2" NPT FITTINGS  
OPEN END BORE 1/2" NPT x 1/2" NPT FITTINGS  
SPRING LOAD TYPE 1/2" NPT x 1/2" NPT FITTINGS  
BRAZING POTTING PLUGS

#### **TRANSITIONS**

STANDARD TRANSITIONS WITH THREADS  
STANDARD TRANSITIONS WITHOUT THREADS

#### **BAYONET FITTINGS**

LOCK CAPS  
BAYONET ADAPTORS

#### **MISCELLANEOUS FITTINGS**

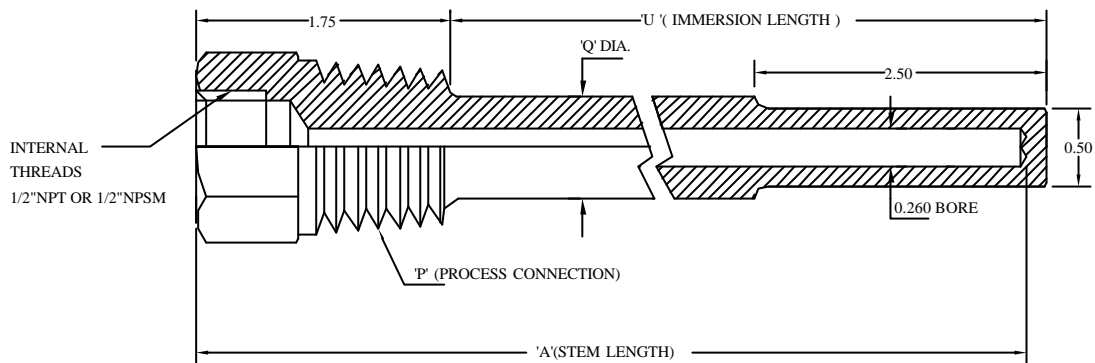
MELT BOLTS  
WELD PADS  
STARIN RELIEF SPRINGS

### **INSTRUMENTATION ACCESSORIES**

AIR DISTRIBUTION MANIFOLD  
TRANSMITTER OVAL FLANGES  
BARREL SYPHONS  
SNUBBERS  
REDUCING BUSHES

<b>DESCRIPTION</b>	:	For use with T/C and RTD assemblies, temperature gauges, filled system temperature elements etc. Machined to close tolerances by deep gun drilling. Suitable for general industrial applications as well as critical process applications.																								
<b>TYPES</b>	:	Standard Parallel Shank Threaded Thermowells, Limited Space Thermowells, Heavy Duty Tapered Thermowells Socket Weld Thermowells, Flanged Thermowells Industrial Glass Thermometer Thermowells Weld In Thermowells, Custom Built Thermowells																								
<b>PROCESS CONNECTIONS</b>	:																									
<b># FLANGED</b>	:	1", 1-1/2", 2" to ANSI / BS / DIN standards in pressure ratings of 150, 300, 600, 900 & 1500 psi. Other standards, sizes and pressure ratings available.																								
<b># THREADED</b>	:	1/2", 3/4", 1" NPT / BSP. Also available in other sizes and thread standards.																								
<b>MATERIALS</b>	:	Carbon Steel – ASTM A105, ASTM A108. St. Steel – ASME-SA-479, ASTM A-182, 304 , 304 L, 316 , 316L, 310. Brass – C36000.																								
<b>STEM LENGTHS</b>	:	2-1/2", 4", 6", 9", 12", 15", 18", 24" - With & without lagging extensions.																								
<b>BORE DIAMETERS</b>	:	0.260", 0.385"																								
<b>TOLERANCES</b>	:	<table border="0"> <tr> <td>Bore Dia</td> <td>:</td> <td>- 0.003"</td> </tr> <tr> <td></td> <td></td> <td>+ 0.005"</td> </tr> <tr> <td>Drill Depth</td> <td>:</td> <td>Upto 30" <math>\pm</math> 1/32"</td> </tr> <tr> <td></td> <td></td> <td>30" to 60" <math>\pm</math> 1/16"</td> </tr> <tr> <td></td> <td></td> <td>&lt; 60 " <math>\pm</math> 1/8"</td> </tr> <tr> <td>External Dia</td> <td>:</td> <td><math>\pm</math> .010</td> </tr> <tr> <td>Concentricity</td> <td>:</td> <td>10% of Minimum Wall Thickness</td> </tr> <tr> <td>Male Thread</td> <td>:</td> <td><math>\pm</math> 1 Turn of Gauge</td> </tr> </table>	Bore Dia	:	- 0.003"			+ 0.005"	Drill Depth	:	Upto 30" $\pm$ 1/32"			30" to 60" $\pm$ 1/16"			< 60 " $\pm$ 1/8"	External Dia	:	$\pm$ .010	Concentricity	:	10% of Minimum Wall Thickness	Male Thread	:	$\pm$ 1 Turn of Gauge
Bore Dia	:	- 0.003"																								
		+ 0.005"																								
Drill Depth	:	Upto 30" $\pm$ 1/32"																								
		30" to 60" $\pm$ 1/16"																								
		< 60 " $\pm$ 1/8"																								
External Dia	:	$\pm$ .010																								
Concentricity	:	10% of Minimum Wall Thickness																								
Male Thread	:	$\pm$ 1 Turn of Gauge																								
<b>TEST PRESSURE</b>	:	3000 psi internal hydrostatic at room temperature.																								
<b>OPTIONS</b>	:	Special Flanged / Welded / Threaded process connections Wide range of materials including SS to NACE MR-01-75 Client specific 'U' dimensions and stem lengths. Bores to suit special bulb diameters Internal threads to client specifications																								
<b>DESIGN STANDARDS</b>	:	ASME-PT6 19.3 ASME- Section VIII DIV 1- Boiler & Pressure vessel code. ASME B31.1 for power piping ANSI B31.3 for Petroleum refineries chemical plants ANSI B2.1- Pipe threads ANSI B1.1 – Straight thread ANSI B16.5 – Flanges																								
<b>REFERENCE DRAWING</b>	:	AITW-STD-001, AITW-LTD-001, AITW-LGE-001 AITW-WGI-LTS-260-001, AITW-WGI-ST-260-001, AITW-WGI-STD-260-001, AITW-WGI-STD-702-001																								

REV.	REASON FOR ISSUE	DATE	DRN.	CHKD.
0.00	PRELIM.REL.	12.03.00	D.K.D.	G.G.A
1.00	REL. FOR MANU.	12.05.00	D.K.D.	G.G.A
2.00	CADDRG.	12.05.02	D.K.D.	G.G.A



PROCESS CONN.	'Q' DIM.	HEX A/F
1/2NPT	5/8	1 1/8
3/4NPT	3/4	1 1/8
1"NPT	1"	1 3/8
TYPICAL P/N: AITW-STD-04-304-08		

<b>PART NO. BUILD UP</b>
AITW: AURA THERMOWELL
STD: STANDARD STEPPED
xx: 'A' STEM LENGTH
XXX: MATL /304 /316 /BRASS
XX: PROCESS CONN.08 = 1/2 "NPT 12=3/4"NPT,16=1"NPT
MATERIAL : 304 SS / 316 SS / BRASS / 304L /316L

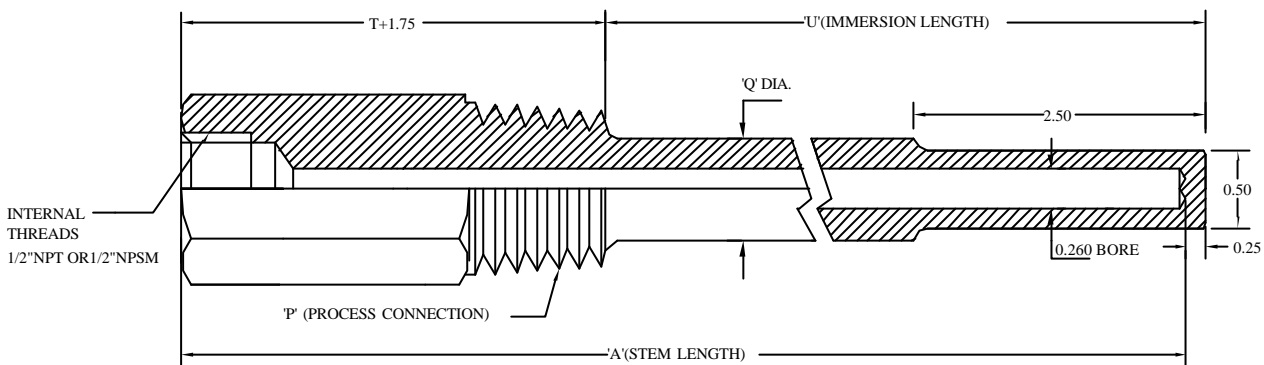
ALL DIMENSIONS ARE IN INCHES.

<b>PROJECT/CLIENT</b>
<b>TITLE</b>
STANDARD STEPPED BARSTOCK THERMOWELL
This drawing is the property of Aura Inc. Unauthorised reproduction is prohibited.

**Aura Inc.**  
D11/3,OKHALA IND. AREA,  
PHASE II, NEW DELHI  
INDIA.  
www.aurainc.com

DRG NO :AITW-STD-001

REV.	REASON FOR ISSUE	DATE	DRN.	CHKD.
0.00	PRELIM.REL.	12.03.00	D.K.D.	G.G.A
1.00	REL.FORMANU.	12.06.00	D.K.D.	G.G.A
2.00	CAD DRG.	12.03.02	D.K.D.	G.G.A



PROCESS CONN.	'Q' DIM.	HEX A/F
1/2NPT	5/8	1 1/8
3/4NPT	3/4	1 1/8
1"NPT	1"	1 3/8

TYPICAL P/N: AITW-LGE-02-06-304-12

<b>PART NO. BUILD UP</b>
AITW: AURA THERMOWELL
LGE: WITH LAGGING EXTENSION
XX: 'A' STEM LENGTH
03: 'T' DIMENSION = 3.0"
XXX: MATL /304 /316 /BRASS
XX: PROCESS CONN.08 = 1/2 "NPT 12=3/4"NPT,16=1"NPT
MATERIAL : 304 SS / 316 SS / BRASS / 304L / 316L

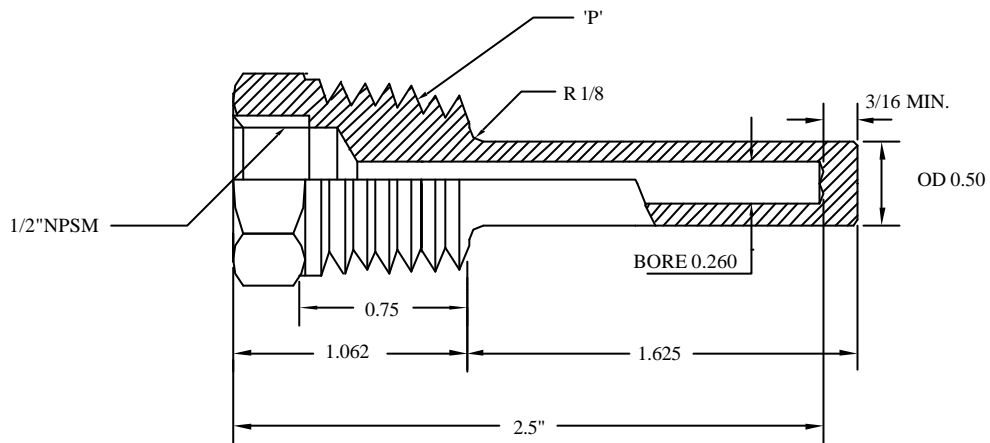
ALL DIMENSIONS ARE IN INCHES.

<b>PROJECT/CLIENT</b>
<b>TITLE</b>
STANDARD STEPPED BARSTOCK THERMOWELL WITH LAGGING EXT.
This drawing is the property of Aura Inc. Unauthorised reproduction is prohibited.

**Aura Inc.**  
D11/3,OKHALA IND. AREA,  
PHASE II, NEW DELHI  
INDIA.  
www.aurainc.com

DRG NO :AITW-LGE-001

REV.	REASON FOR ISSUE	DATE	DRN.	CHKD.
0.00	PRELIM.REL.	12.06.00	D.K.D.	G.G.A
1.00	REL. FOR MANU.	12.08.00	D.K.D.	G.G.A
2.00	CADDRG.	12.06.02	D.K.D.	G.G.A



<b>PART NO. BUILD UP</b>
AITW: AURA THERMOWELL
LTS: LIMITED SPACE
XXX: MATL /304 /316 /BRASS
XX: 'P' PROCESS CONN. 12=3/4"NPT,16=1"NPT
MATERIAL : 304 SS / 316 SS / BRASS / 304L /316L

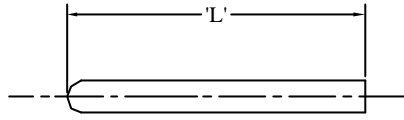
ALL DIMENSIONS ARE IN INCHES.

<b>PROJECT/CLIENT</b>
<b>TITLE</b>
LIMITED SPACE THERMOWELL
This drawing is the property of Aura Inc. Unauthorised reproduction is prohibited.

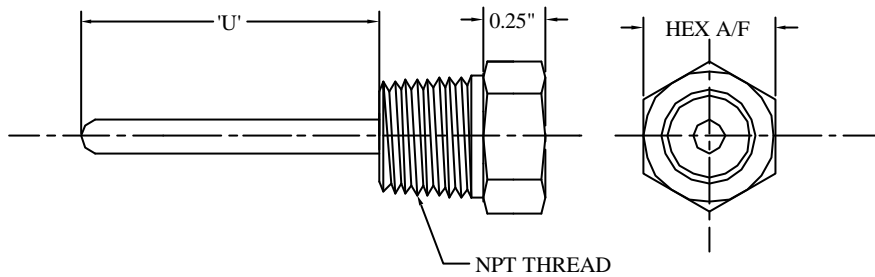
**Aura Inc.**  
D11/3,OKHALA IND. AREA,  
PHASE II, NEW DELHI  
INDIA.  
www.aurainc.com

DRG NO :AITW-LTS-001

REV.	REASON FOR ISSUE	DATE	DRN.	CHKD.
0.00	PRELIM.REL.	12.03.01	D.K.D.	G.G.A
1.00	REL. FOR MANU.	12.06.01	D.K.D.	G.G.A



**SENSOR PROTECTION TUBE**



**SENSOR PROTECTION TUBES WITH HEX HEADS**

**SENSOR PROTECTION TUBE**

<b>PART NO. BUILD UP</b>
ASPT: AURA SENSOR PROTECTION TUBE
XXX: MATERIAL
XX: O.D IN MM.
XX: I.D IN MM.
XX: LENGTH OF TUBE 'L'
TYPICAL P/N. ASPT - 304 - 3.2- 2.7 - 1.5

**SENSOR PROTECTION TUBES WITH HEX HEADS**

<b>PART NO. BUILD UP</b>
ASPT: AURA SENSOR PROTECTION TUBE
XXX: MATERIAL
XX: O.D IN MM.
XX: I.D IN MM.
XX: 'U' LENGTH
XX: PROCESS CONNECTION
TYPICAL P/N. ASPT - 304 - 3.2- 2.7 - 1.0 - 2

SAMPLE PART NOS.
1. FOR CLOSED END PROTECTION TUBES, ASPT - MATL -O/D-IN MM X ID IN MM.
2. FOR CLOSED END PROTECTION TUBES WITH HEADS, ASPT - MATL -O/D-IN MM X ID IN MM NPT THREADS(2=1/8"NPT,4="1/4"NPT,8=1/2"NPT)

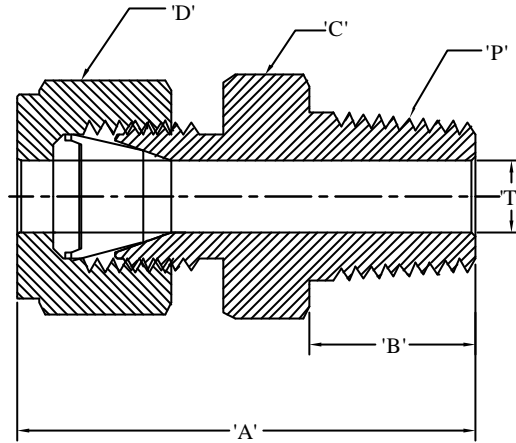
ALL DIMENSIONS ARE IN INCHES.

NPT	HEX A/F
1/8"NPT	7/16"
1/4"NPT	9/16"
1/2"NPT	7/8"
MATERIAL:	304 SS /316 SS

<b>PROJECT/CLIENT</b>
<b>TITLE</b>
SENSOR HOUSINGS AND PROTECTION TUBES
This drawing is the property of Aura Inc. Unauthorised reproduction is prohibited.

<b>Aura Inc.</b> D11/3,OKHALA IND. AREA, PHASE II, NEW DELHI INDIA. www.aurainc.com
DRG NO :ASPT - STD -001

REV.	REASON FOR ISSUE	DATE	DRN.	CHKD.
0.00	PRELIM.REL.	12.03.00	D.K.D.	G.G.A
1.00	REL. FOR MANU.	2.08.00	D.K.D.	G.G.A



PART NO.	TUBE O.D 'T'	THREAD NPT 'P'	'A'	'B'	HEX A/F 'C'	HEX A/F 'D'
1AMC1-BT	1/16"	1/16"	0.94	0.38	5/16	5/16
1AMC2-BT	1/16"	1/8"	1.03	0.38	7/16	5/16
1AMC4-BT	1/16"	1/4"	1.22	0.56	9/16	5/16
2AMC2-BT	1/8"	1/8"	1.20	0.38	7/16	7/16
2AMC4-BT	1/8"	1/4"	1.40	0.56	9/16	7/16
2AMC8-BT	1/8"	1/2"	1.66	0.75	7/8	7/16
3AMC2-BT	3/16"	1/8"	1.23	0.38	7/16	1/2
3AMC4-BT	3/16"	1/4"	1.43	0.56	9/16	1/2
4AMC2-BT	1/4"	1/8"	1.29	0.38	1/2	9/16
4AMC4-BT	1/4"	1/4"	1.49	0.56	9/16	9/16
4AMC6-BT	1/4"	3/8"	1.51	0.56	11/16	9/16
4AMC8-BT	1/4"	1/2"	1.76	0.75	7/8	9/16
6AMC4-BT	3/8"	1/4"	1.57	0.56	5/8	11/16
6AMC6-BT	3/8"	3/8"	1.57	0.56	11/16	11/16
6AMC8-BT	3/8"	1/2"	1.82	0.75	7/8	11/16
8AMC8-BT	1/2"	1/2"	1.93	0.75	7/8	7/8

ALL DIMENSIONS ARE IN INCHES.

**NOTE:**

- (1) FOR DOUBLE FERRULE ,ADD SUFFIX 'D' TO P/N.
- (2) FOR PTFE ADD SUFFIX PTFE TO P/N.
- (3)PTFE FERRULE AVAILABLE ONLY AS SINGLE FERRULE.

**MATERIAL: 316SS**

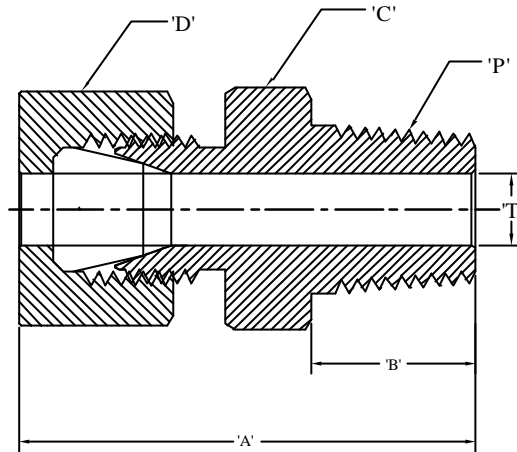
<b>PROJECT/CLIENT</b>
<b>TITLE</b>
<b>BORE THROUGH COMPRESSION FITTINGS</b>

**Aura Inc.**  
**D11/3,OKHALA IND. AREA,**  
**PHASE II, NEW DELHI**  
**INDIA.**  
**www.aurainc.com**

This drawing is the property of Aura Inc.  
 Unauthorised reproduction is prohibited.

**DRG NO :AMC-BT-316-001**

REV.	REASON FOR ISSUE	DATE	DRN.	CHKD.
0.00	PRELI. REL.	12.03.01	D.K.D.	G.G.A
1.00	REL. FOR MANU.	12.07.01	D.K.D.	G.G.A



PART NO.	TUBE O.D 'T'	BORE SIZE	THREAD NPT 'P'	'A'	'B'	HEX A/F 'C'	HEX A/F 'D'
1AMC2-BT-BR-X	1/16"	0.069	1/8"	1.2	0.38	7/16	3/8
0.093AMC2-BT-BR-X	1/16"	0.100	1/8"	0.94	0.38	7/16	3/8
2AMC2-BT-BR-X	1/8"	0.131	1/8"	1.2	0.38	3/8	7/16
2AMC4-BT-BR-X	1/8"	0.131	1/4"	1.26	0.50	9/16	7/16
3AMC2-BT-BR-X	3/16"	0.188	1/8"	1.20	0.38	7/16	7/16
3AMC4-BT-BR-X	3/16"	0.188	1/4"	1.30	0.50	9/16	1/2
4AMC2-BT-BR-X	1/4"	0.257	1/8"	1.15	0.38	7/16	1/2
4AMC4-BT-BR-X	1/4"	0.257	1/4"	1.30	0.50	9/16	1/2
6AMC4-BT-BR-X	3/8"	0.382	1/4"	1.40	0.50	5/8	11/16
6AMC8-BT-BR-X	3/8"	0.382	1/2"	1.60	0.70	7/8	11/16

ALL DIMENSIONS ARE IN INCHES.

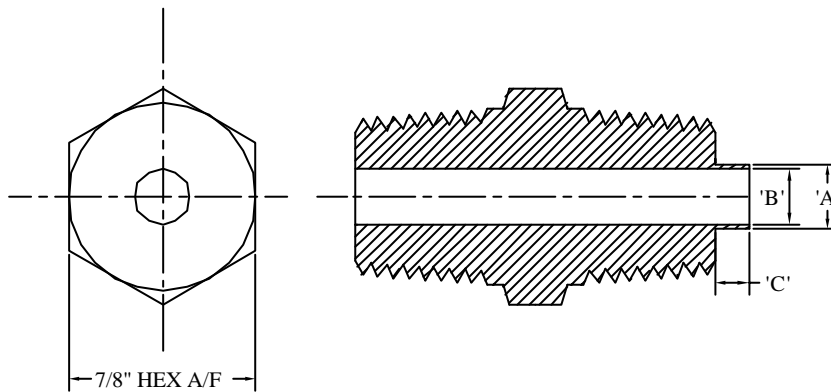
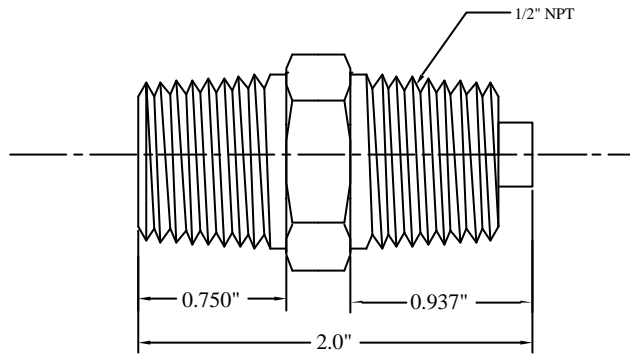
MATERIAL
BODY & NUT: BRASS
FERRULES : BRASS/PTFE
FERRULE DESIGN: SINGLE

PROJECT/CLIENT
TITLE
BORE THROUGH COMPRESSION FITTINGS
This drawing is the property of Aura Inc. Unauthorised reproduction is prohibited.

<b>Aura Inc.</b> D11/3,OKHALA IND. AREA, PHASE II, NEW DELHI INDIA. www.aurainc.com
<b>DRG NO :AMC-BT-BRX-001</b>



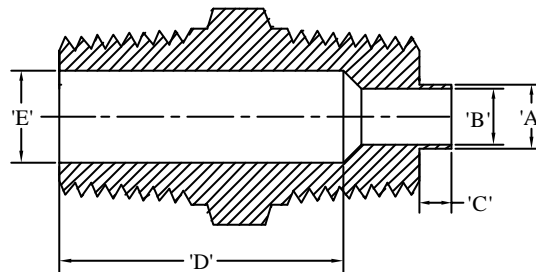
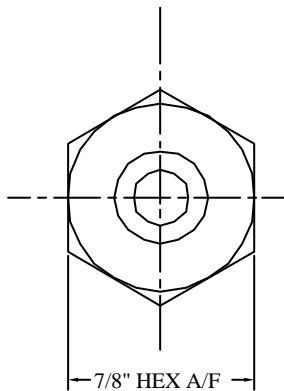
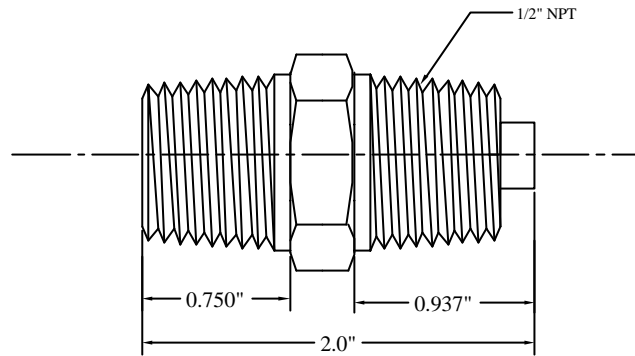
REV.	REASON FOR ISSUE	DATE	DRN.	CHKD.
0.00	PRELIM.REL.	12.03.00	D.K.D.	G.G.A
1.00	REL. FOR MANU.	12.06.00	D.K.D.	G.G.A



ALL DIMENSIONS ARE IN INCHES.

PART NO.	'A'	'B'	'C'	PROJECT/CLIENT	<b>Aura Inc.</b> D11/3,OKHALA IND. AREA, PHASE II, NEW DELHI INDIA. www.aurainc.com
ATHF -STB -01	0.374	0.261	0.187		
ATHF -STB -02	0.298	0.198	0.187	<b>TITLE</b>	
ATHF -STB -03	0.236	0.138	0.187	THERMOCOUPLE HEAD FITTINGS STRAIGHT THROUGH BORE	
MATERIAL: 316 SS				This drawing is the property of Aura Inc. Unauthorised reproduction is prohibited.	DRG NO :ATHF - STB -001

REV.	REASON FOR ISSUE	DATE	DRN.	CHKD.
0.00	PRELIM.REL.	23.04.00	D.K.D.	G.G.A
1.00	REL. FOR MANU.	12.07.00	D.K.D.	G.G.A



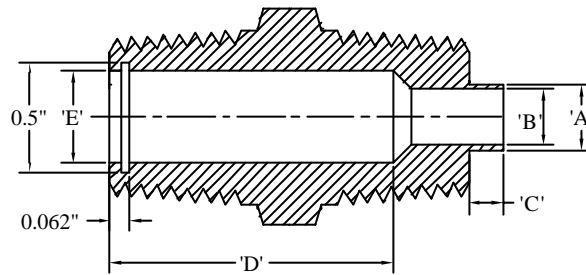
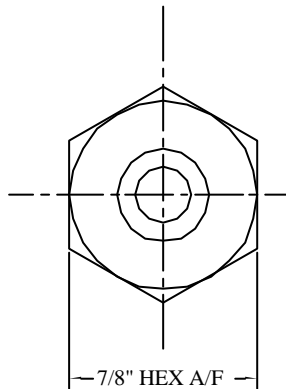
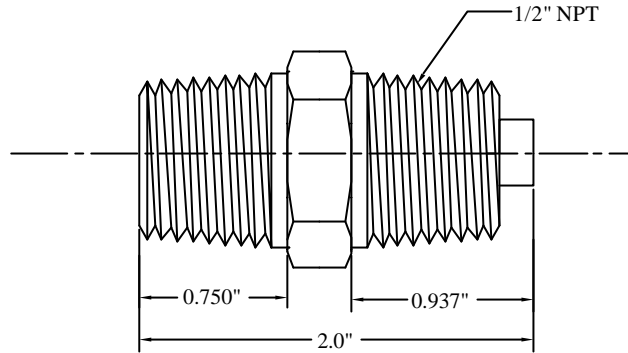
ALL DIMENSIONS ARE IN INCHES.

PART NO.	'A'	'B'	'C'	'D'	'E'	PROJECT/CLIENT
ATHF -OEB - 01	0.374	0.261	0.187	1.5	0.515	
ATHF - OEB - 02	0.298	0.198	0.187	1.5	0.515	TITLE
ATHF - OEB - 03	0.236	0.138	0.187	1.5	0.515	THERMOCOUPLE HEAD FITTINGS OPEN END BORE
MATERIAL: 316SS						This drawing is the property of Aura Inc. Unauthorised reproduction is prohibited.

**Aura Inc.**  
D11/3,OKHALA IND. AREA,  
PHASE II, NEW DELHI  
INDIA.  
www.aurainc.com

DRG NO : ATHF - OEB -001

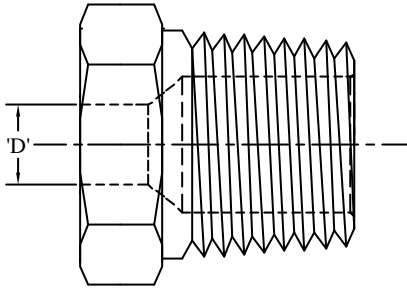
REV.	REASON FOR ISSUE	DATE	DRN.	CHKD.
0.00	PRELIM.REL.	12.03.00	D.K.D.	G.G.A
1.00	REL. FOR MANU.	12.05.00	D.K.D.	G.G.A



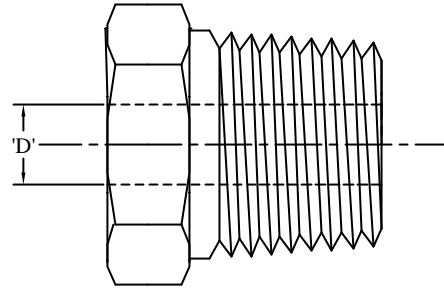
ALL DIMENSIONS ARE IN INCHES.

PART NO.	'A'	'B'	'C'	'D'	'E'	PROJECT/CLIENT	<b>Aura Inc.</b> D11/3,OKHALA IND. AREA, PHASE II, NEW DELHI INDIA. www.aurainc.com
ATHF - SLF - 01	0.50	0.261	0.125	1.625	0.454		
ATHF - SLF - 02	0.50	0.198	0.125	1.625	0.454	<b>TITLE</b>	
ATHF - SLF - 03	0.50	0.138	0.125	1.625	0.454	<b>THERMOCOUPLE  HEAD FITTINGS  SPRING LOAD TYPE</b>	
MATERIAL: 316SS						This drawing is the property of Aura Inc. Unauthorized reproduction is prohibited.	DRG NO :ATHF - SLF -001

REV.	REASON FOR ISSUE	DATE	DRN.	CHKD.
0.00	PRELIM.REL.	12.03.02	D.K.D.	G.G.A
1.00	REL. FOR MANU.	12.09.02	D.K.D.	G.G.A



WITH STEP BORE



WITH THROUGH BORE

PART NO.	'D' DIM.	THREAD
ABPP-104-002	1/16"	1/8"NPT
ABPP-104-004	1/16"	1/4"NPT
ABPP-104-002	1/16"	1/2"NPT
ABPP-204-002	1/8"	1/8"NPT
ABPP-204-004	1/8"	1/4"NPT
ABPP-204-008	1/8"	1/2"NPT
ABPP-304-002	3/16"	1/8"NPT
ABPP-304-004	3/16"	1/4"NPT
ABPP-304-008	3/16"	1/2"NPT
ABPP-404-002	1/4"	1/8"NPT
ABPP-404-004	1/4"	1/4"NPT
ABPP-404-008	1/4"	1/2"NPT
ABPP-604-008	3/8"	1/2"NPT

PART NO.	'D' DIM.	THREAD
ABPP-104-002-BT	1/16"	1/8"NPT
ABPP-104-004-BT	1/16"	1/4"NPT
ABPP-104-002-BT	1/16"	1/2"NPT
ABPP-204-002-BT	1/8"	1/8"NPT
ABPP-204-004-BT	1/8"	1/4"NPT
ABPP-204-008-BT	1/8"	1/2"NPT
ABPP-304-002-BT	3/16"	1/8"NPT
ABPP-304-004-BT	3/16"	1/4"NPT
ABPP-304-008-BT	3/16"	1/2"NPT
ABPP-404-002-BT	1/4"	1/8"NPT
ABPP-404-004-BT	1/4"	1/4"NPT
ABPP-404-008-BT	1/4"	1/2"NPT
ABPP-604-008-BT	3/8"	1/2"NPT

ALL DIMENSIONS ARE IN INCHES.

<b>PROJECT/CLIENT</b>	<b>Aura Inc.</b> <b>D11/3,OKHALA IND. AREA,</b> <b>PHASE II, NEW DELHI</b> <b>INDIA.</b> <b>www.aurainc.com</b>
<b>TITLE</b>	
<b>BRAZING / POTTING THREADED PLUGS</b>	

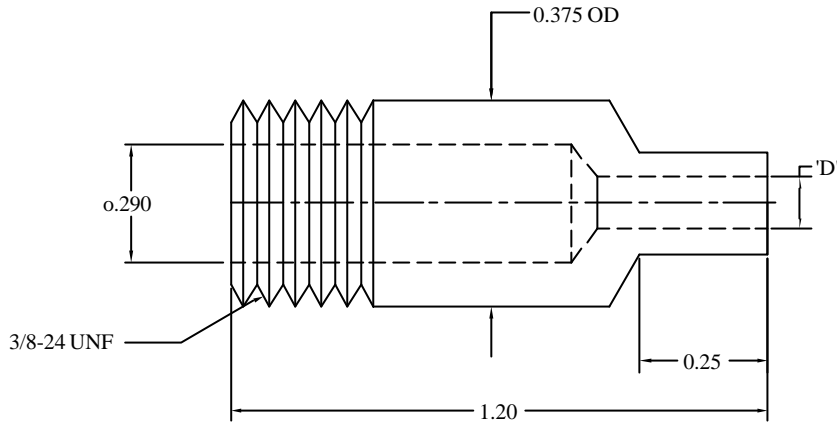
This drawing is the property of Aura Inc.  
 Unauthorised reproduction is prohibited.

DRG NO :ABPP - STD -001

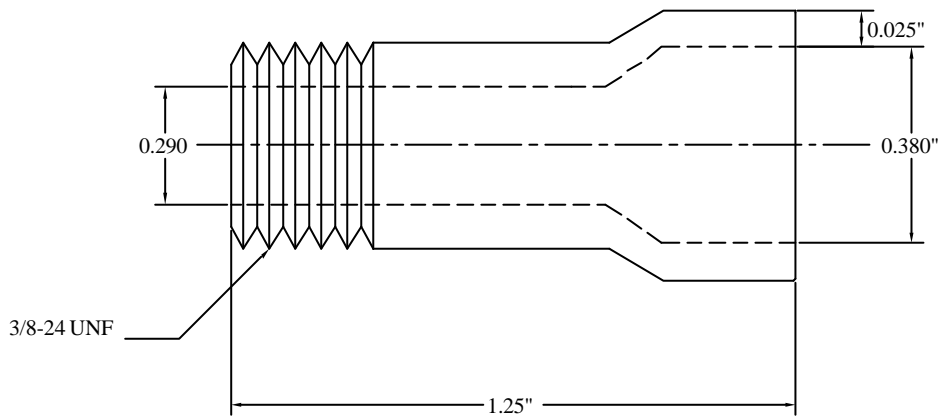
MATERIAL

304 SS / C.S / ZINC PLATED

REV.	REASON FOR ISSUE	DATE	DRN.	CHKD.
0.00	PRELIM.REL.	12.03.01	D.K.D.	G.G.A
1.00	REL. FOR MANU.	12.05.01	D.K.D.	G.G.A



ATHF - SWT - 001 TO ATHF - SWT - 006



ATHF - SWT - 006

PART NO.	TUBE SIZE 'D'
ATHF - SWT - 001	1/16"
ATHF - SWT - 002	1/8"
ATHF - SWT - 003	3/16"
ATHF - SWT - 004	1/4"
ATHF - SWT - 006	3/8"
MATERIAL: 304 SS	

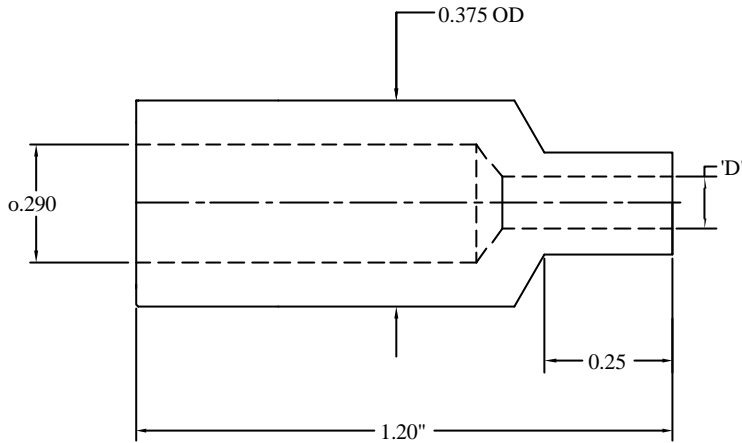
ALL DIMENSIONS ARE IN INCHES.

<b>PROJECT/CLIENT</b>
<b>TITLE</b>
STANDARD THREADED TRANSITION FITTINGS
This drawing is the property of Aura Inc. Unauthorised reproduction is prohibited.

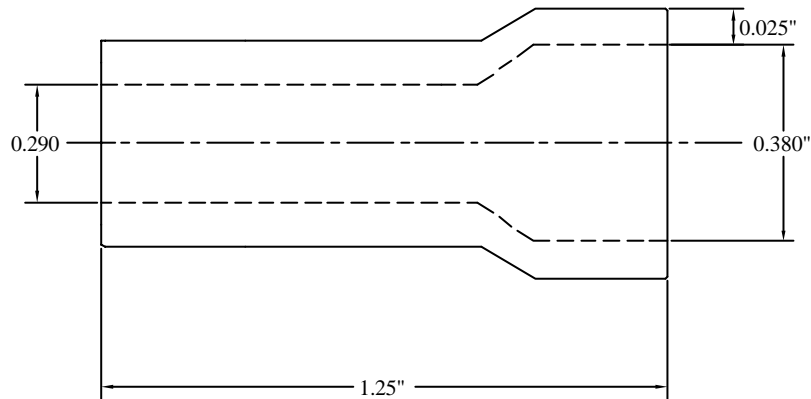
**Aura Inc.**  
D11/3,OKHALA IND. AREA,  
PHASE II, NEW DELHI  
INDIA.  
www.aurainc.com

DRG NO : ATF - SWT -001

REV.	REASON FOR ISSUE	DATE	DRN.	CHKD.
0.00	PRELIM.REL.	12.03.01	D.K.D.	G.G.A
1.00	REL. FOR MANU.	12.04.01	D.K.D.	G.G.A



ATHF - SNT - 001 TO ATHF - SNT - 006



ATHF - SNT - 006

PART NO.	TUBE SIZE 'D'
ATHF - SNT - 001	1/16"
ATHF - SNT - 002	1/8"
ATHF - SNT - 003	3/16"
ATHF - SNT - 004	1/4"
ATHF - SNT - 006	3/8"
MATERIAL: 304 SS	

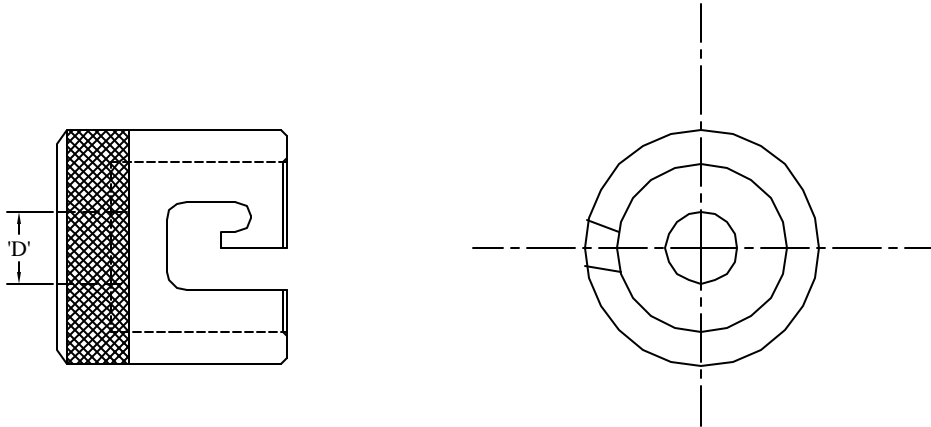
ALL DIMENSIONS ARE IN INCHES.

<b>PROJECT/CLIENT</b>
<b>TITLE</b>
STANDARD TRASITION FITTINGS WITHOUT THREAD
This drawing is the property of Aura Inc. Unauthorised reproduction is prohibited.

**Aura Inc.**  
D11/3,OKHALA IND. AREA,  
PHASE II, NEW DELHI  
INDIA.  
www.aurainc.com

DRG NO : ATF -SNT -001

REV.	REASON FOR ISSUE	DATE	DRN.	CHKD.
0.00	PRELIM.REL.	21.07.01	D.K.D.	G.G.A
1.00	REL. FOR MANU.	12.09.01	D.K.D.	G.G.A

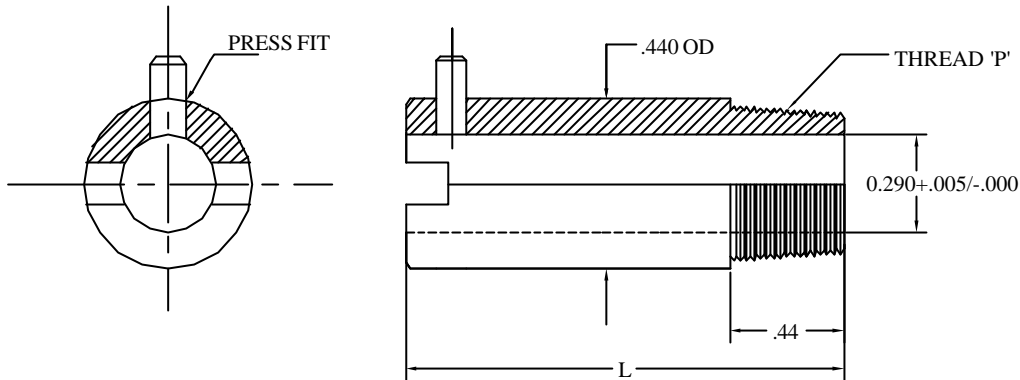


PART NO.	TUBE SIZE 'D'	MATERIAL
ABAF - BRZ - 001	FOR 3/16" ID ARMOUR	BRASS ZINC PLATED
ABAF - BRZ - 002	1/8" PROBE	BRASS ZINC PLATED
ABAF - BRZ - 003	3/16" PROBE	BRASS ZINC PLATED
ABAF - 304 - 001	FOR 3/16" ID ARMOUR	304 SS
ABAF - 304 - 002	1/8" PROBE	304 SS
ABAF - 304 - 003	3/16" PROBE	304 SS

ALL DIMENSIONS ARE IN INCHES.

PROJECT/CLIENT	<p style="text-align: center;"><b>Aura Inc.</b> D11/3,OKHALA IND. AREA, PHASE II, NEW DELHI INDIA. <a href="http://www.aurainc.com">www.aurainc.com</a></p>
TITLE	
<p style="text-align: center;">BAYONET LOCK CAPS</p>	
<p>This drawing is the property of Aura Inc. Unauthorised reproduction is prohibited.</p>	
<p style="text-align: right;">DRG NO : ABLC-STD-001</p>	

REV.	REASON FOR ISSUE	DATE	DRN.	CHKD.
0.00	PRELIM.REL.	12.03.00	D.K.D.	G.G.A
1.00	REL. FOR MANU.	18.08.00	D.K.D.	G.G.A



PART NO.	'L'	THREAD	MATERIAL
ABYA - CSZ - 078 -2	7/8"	1/8" NPT	CS ZINC PL.
ABYA - 304 - 078 -2	7/8"	1/8" NPT	304 SS
ABYA - CSZ - 100 -2	1.0"	1/8" NPT	CS ZINC PL.
ABYA -304 - 100 -2	1.0"	1/8" NPT	304 SS
ABYA - CSZ - 125 -2	1-1/4"	1/8" NPT	CS ZINC PL.
ABYA -304 - 125 -2	1-1/4"	1/8" NPT	304 SS
ABYA - CSZ - 138 - 2	1-3/8"	1/8" NPT	CS ZINC PL.
ABYA - 304 - 138 - 2	1-3/8"	1/8" NPT	304 SS
ABYA - CSZ -150- 2	1-1/2"	1/8" NPT	CS ZINC PL.
ABYA - 304 -150- 2	1-1/2"	1/8" NPT	304 SS
ABYA - CSZ -200- 2	2.0"	1/8" NPT	CS ZINC PL.
ABYA - 304 -200- 2	2.0"	1/8" NPT	304 SS
ABYA - CSZ -250- 2	2-1/2"	1/8" NPT	CS ZINC PL.
ABYA -304 -250- 2	2-1/2"	1/8" NPT	304 SS
ABYA - CSZ -300-2	3.0"	1/8" NPT	CS ZINC PL.
ABYA - 304-300-2	3.0"	1/8" NPT	304 SS
ABYA - CSZ -350-2	3-1/2"	1/8" NPT	CS ZINC PL.
ABYA - 304-350-2	3-1/2"	1/8" NPT	304 SS
ABYA - CSZ - 400 -2	4.0"	1/8" NPT	CS ZINC PL.
ABYA - 304-400-2	4.0"	1/8" NPT	304 SS

PART NO.	'L'	THREAD	MATERIAL
ABYA - CSZ - 078 - 3	7/8"	3/8-24 UNF	CS ZINC PL.
ABYA - 304 - 078 -3	7/8"	3/8-24 UNF	304 SS
ABYA - CSZ - 100 -3	1.0"	3/8-24 UNF	CS ZINC PL.
ABYA -304 - 100 - 3	1.0"	3/8-24 UNF	304 SS
ABYA - CSZ - 125 - 3	1-1/4"	3/8-24 UNF	CS ZINC PL.
ABYA -304 - 125 -3	1-1/4"	3/8-24 UNF	304 SS
ABYA - CSZ - 138 - 3	1-3/8"	3/8-24 UNF	CS ZINC PL.
ABYA - 304 - 138 - 3	1-3/8"	3/8-24 UNF	304 SS
ABYA - CSZ -150- 3	1-1/2"	3/8-24 UNF	CS ZINC PL.
ABYA - 304 -150- 3	1-1/2"	3/8-24 UNF	304 SS
ABYA - CSZ -200- 3	2.0"	3/8-24 UNF	CS ZINC PL.
ABYA - 304 -200- 3	2.0"	3/8-24 UNF	304 SS
ABYA - CSZ -250- 3	2-1/2"	3/8-24 UNF	CS ZINC PL.
ABYA -304 -250- 3	2-1/2"	3/8-24 UNF	304 SS
ABYA - CSZ -300-3	3.0"	3/8-24 UNF	CS ZINC PL.
ABYA - 304-300-3	3.0"	3/8-24 UNF	304 SS
ABYA - CSZ -350-3	3-1/2"	3/8-24 UNF	CS ZINC PL.
ABYA - 304-350-3	3-1/2"	3/8-24 UNF	304 SS
ABYA - CSZ - 400 -3	4.0"	3/8-24 UNF	CS ZINC PL.
ABYA - 304-400-3	4.0"	3/8-24 UNF	304 SS

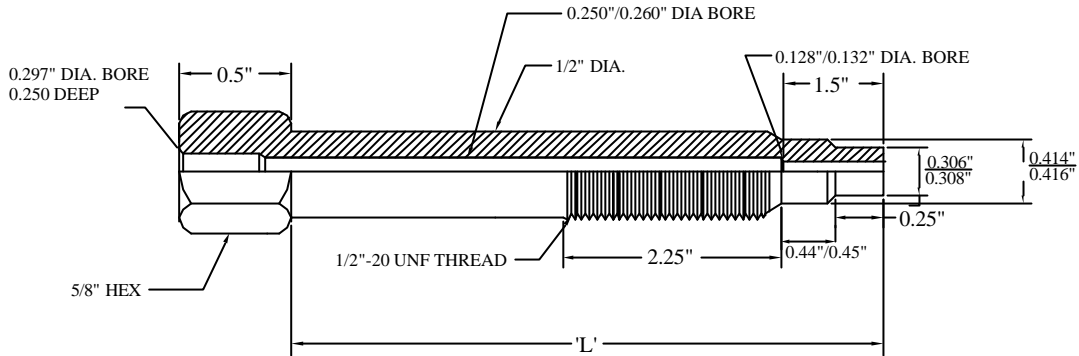
ALL DIMENSIONS ARE IN INCHES.

PROJECT/CLIENT	<p style="text-align: center;"><b>Aura Inc.</b> D11/3,OKHALA IND. AREA, PHASE II, NEW DELHI INDIA. www.aurainc.com</p>
TITLE	
BAYONET ADAPTORS	
This drawing is the property of Aura Inc. Unauthorised reproduction is prohibited.	
DRG NO :ABYA-STD-001	

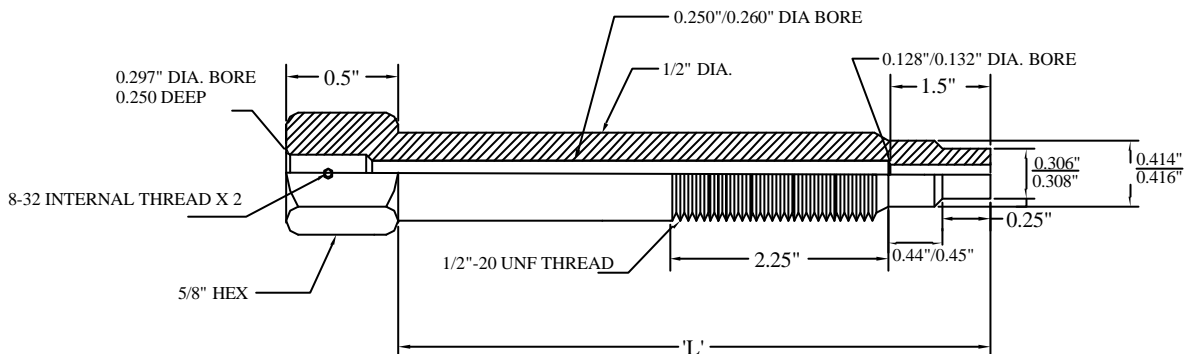


REV.	REASON FOR ISSUE	DATE	DRN.	CHKD.
0.00	PRELIM.REL.	16.03.00	D.K.D.	G.G.A
1.00	REL. FOR MANU.	12.07.00	D.K.D.	G.G.A

**STANDARD MELT BOLT**



**MELT BOLT WITH SET SCREW FOR ARMOUR**



**STANDARD MELT BOLT**

PART NO.	MATERIAL	'L'
AMTB-304-003	304 SS	3.0"
AMTB-304-004	304 SS	4.0"
AMTB-304-006	304 SS	6.0"
AMTB-304-009	304 SS	9.0"

**MELT BOLT WITH SET SCREW FOR ARMOUR**

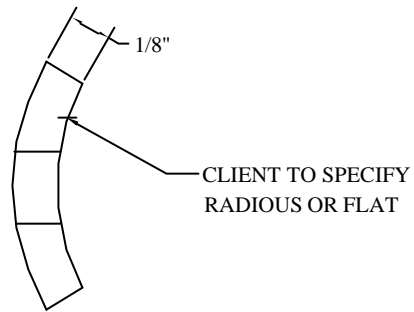
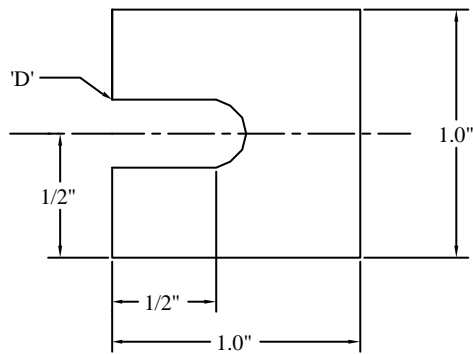
PART NO.	MATERIAL	'L'
AMTB-304-003X	304 SS	3.0"
AMTB-304-004X	304 SS	4.0"
AMTB-304-006X	304 SS	6.0"
AMTB-304-009X	304 SS	9.0"

NOTE: BLANK MELT BOLT AVAILABLE  
ADD 'B' TO P/N. Eg. AMTB-304-003B

ALL DIMENSIONS ARE IN INCHES.

<b>PROJECT/CLIENT</b>	<p align="center"><b>Aura Inc.</b> D11/3,OKHALA IND. AREA, PHASE II, NEW DELHI INDIA. www.aurainc.com</p>
<b>TITLE</b>	
<b>MELT BOLTS</b>	
This drawing is the property of Aura Inc. Unauthorised reproduction is prohibited.	
<b>DRG NO :AMTB-STD-001</b>	

REV.	REASON FOR ISSUE	DATE	DRN.	CHKD.
0.00	PRELIM.REL.	12.03.01	D.K.D.	G.G.A
1.00	REL. FOR MANU.	12.05.01	D.K.D.	G.G.A



'D': ASPER CLIENTS REQUIRMENTS.

OPTIONAL MATERIAL: 316 SS

ALL DIMENSIONS ARE IN INCHES.

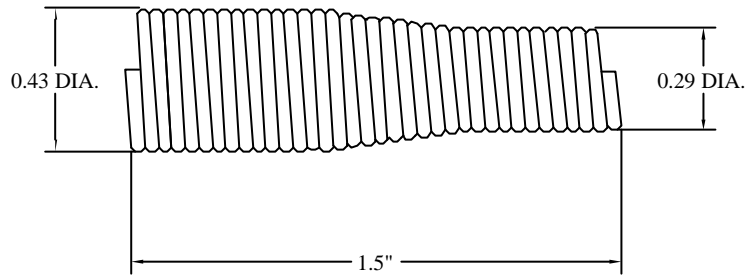
PART NO.	'D'	MATERIAL
AWPD - STD -304 - 02 - 001	1/8"	304 SS
AWPD - STD -304 - 03 - 001	3/16"	304 SS
AWPD - STD -304 - 04 - 001	1/4"	304 SS

PROJECT/CLIENT
TITLE
WELD PAD
This drawing is the property of Aura Inc. Unauthorised reproduction is prohibited.

**Aura Inc.**  
D11/3,OKHALA IND. AREA,  
PHASE II, NEW DELHI  
INDIA.  
www.aurainc.com

DRG NO : AWPD-STD-001

REV.	REASON FOR ISSUE	DATE	DRN.	CHKD.
0.00	PRELIM.REL.	12.03.02	D.K.D.	G.G.A
1.00	REL. FOR MANU.	12.06.02	D.K.D.	G.G.A



**SPRING SUITABLE FOR ATHF-SWT SERIES TRANSITION FITTINGS**

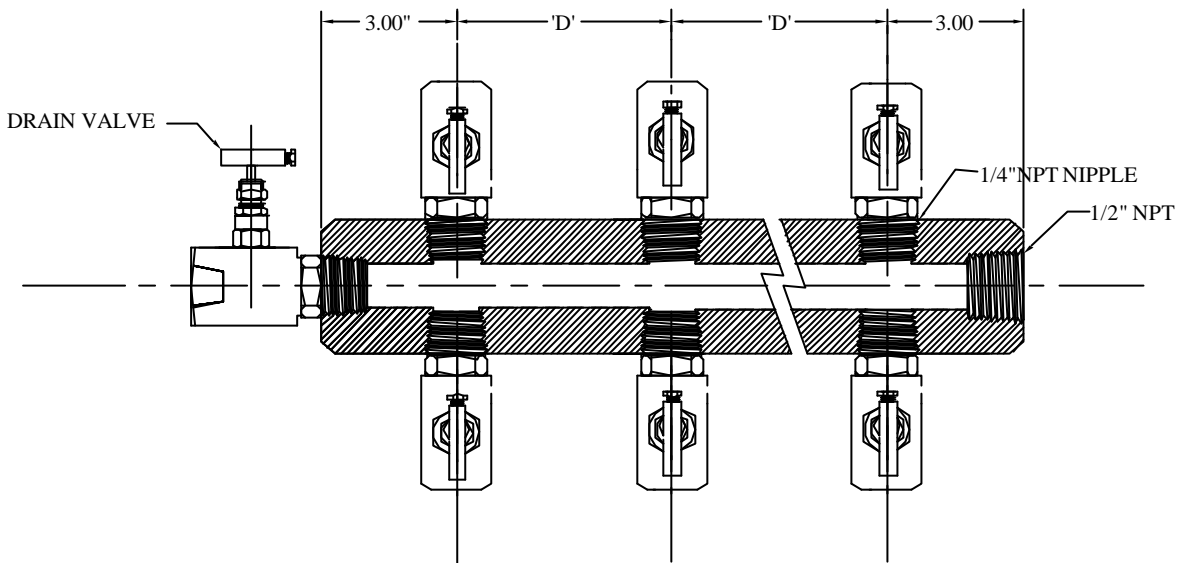
ALL DIMENSIONS ARE IN INCHES.

<b>PROJECT/CLIENT</b>	<p><b>Aura Inc.</b>  D11/3,OKHALA IND. AREA,  PHASE II, NEW DELHI  INDIA.  www.aurainc.com</p>
<b>TITLE</b>	
<b>STRAIN RELIEF SPRING</b>	
This drawing is the property of Aura Inc. Unauthorised reproduction is prohibited.	
<b>DRG NO :ASRS-STD-001</b>	

**MATERIAL: MUSIC WIRE**

**FINISH: ZINC PLATING**

REV.	REASON FOR ISSUE	DATE	DRN.	CHKD.
0.00	PRELIM.REL.	21.07.04	D.K.D.	G.G.A
1.00	REL. FOR MANU.	12.09.04	D.K.D.	G.G.A



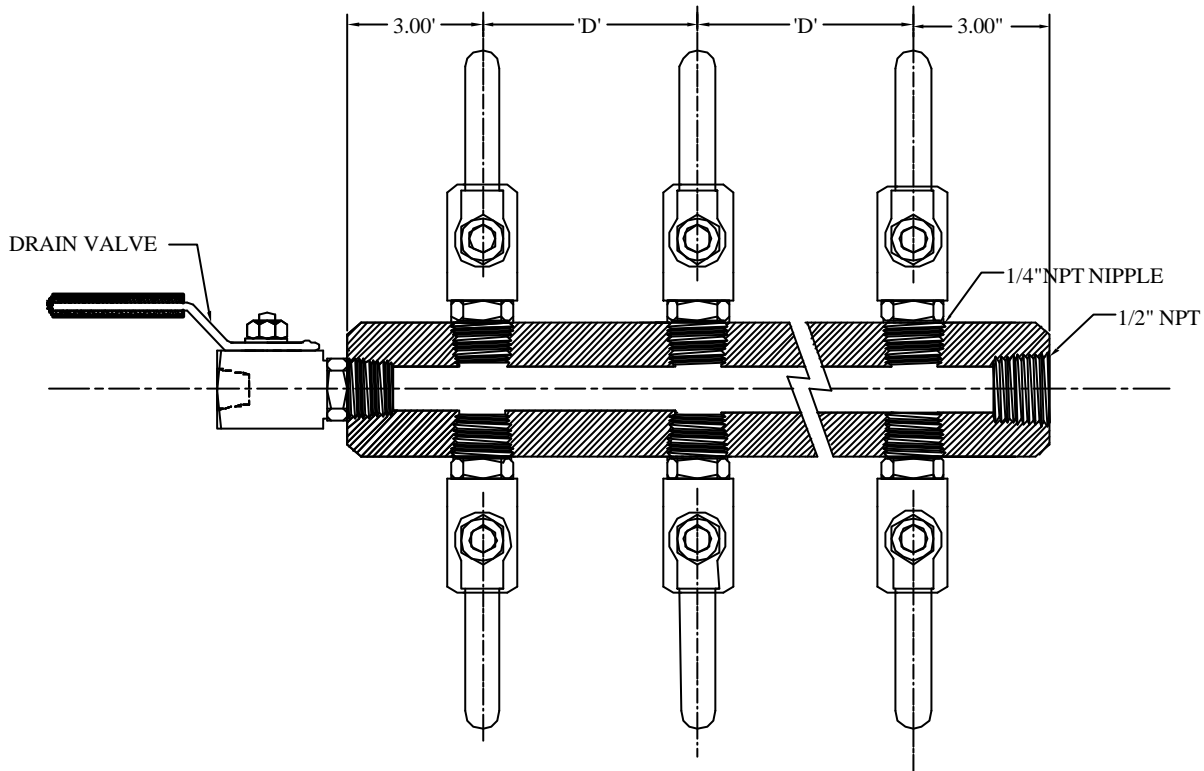
SIZE	VALVE DIST. 'D'
1/4" NPT	2.75
1/2" NPT	3.5

<b>PART NO. BUILD UP</b>
AADMNV: AURA AIR DISTRIBUTION MANIFOLD
XX: VALVE SIZE ,04 = 1/4" , 08 = 1/2"
XX: NO. OF WAYS , 06= SIX , 10=TEN , 14= FORTEEN
XX: MATERIAL, CS= CARBON STEEL,SS=304SS
TYPICAL P/N. AADM-NV-04-06-316SS

ALL DIMENSIONS ARE IN INCHES.

<b>PROJECT/CLIENT</b>	<p><b>Aura Inc.</b>  D11/3,OKHALA IND. AREA,  PHASE II, NEW DELHI  INDIA.  www.aurainc.com</p>
<b>TITLE</b>	
AIR DISTRIBUTION MANIFOLD NEEDLE VALVE	
This drawing is the property of Aura Inc. Unauthorised reproduction is prohibited.	
DRG NO : AADM -NV - STD - 001	

REV.	REASON FOR ISSUE	DATE	DRN.	CHKD.
0.00	PRELIM.REL.	21.07.04	D.K.D.	G.G.A
1.00	REL. FOR MANU.	12.09.04	D.K.D.	G.G.A



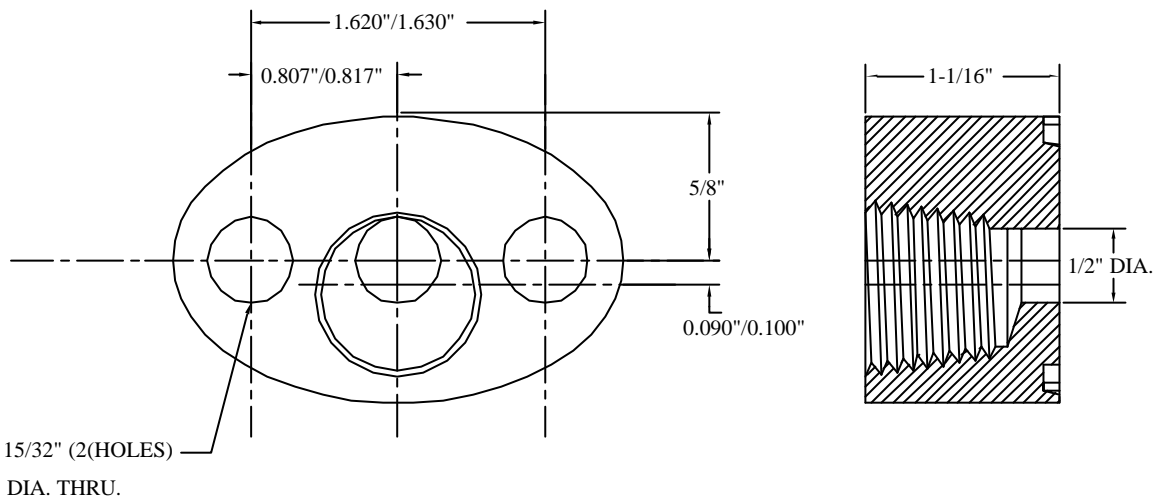
SIZE	VALVE DIST. 'D'
1/4" NPT	2.75
1/2" NPT	3.5

<b>PART NO. BUILD UP</b>
AADMBV: AURA AIR DISTRIBUTION MANIFOLD
XX: VALVE SIZE ,04 = 1/4", 08 = 1/2"
XX: NO. OF WAYS , 06= SIX , 10=TEN , 14= FORTEEN
XX:MATERIAL,CS= CARBON STEEL,SS= 304SS
TYPICAL P/N. AADM-BV-04-06-SS

ALL DIMENSIONS ARE IN INCHES.

<b>PROJECT/CLIENT</b>	<p><b>Aura Inc.</b>  D11/3,OKHALA IND. AREA,  PHASE II, NEW DELHI  INDIA.  www.aurainc.com</p>
<b>TITLE</b>	
AIR DISTRIBUTION MANIFOLD BALL VALVE	
This drawing is the property of Aura Inc. Unauthorised reproduction is prohibited.	
DRG NO : AADM - BV - STD - 001	

REV.	REASON FOR ISSUE	DATE	DRN.	CHKD.
0.00	PRELIM.REL.	12.03.01	D.K.D.	G.G.A
1.00	REL. FOR MANU.	12.06.01	D.K.D.	G.G.A



ALL DIMENSIONS ARE IN INCHES.

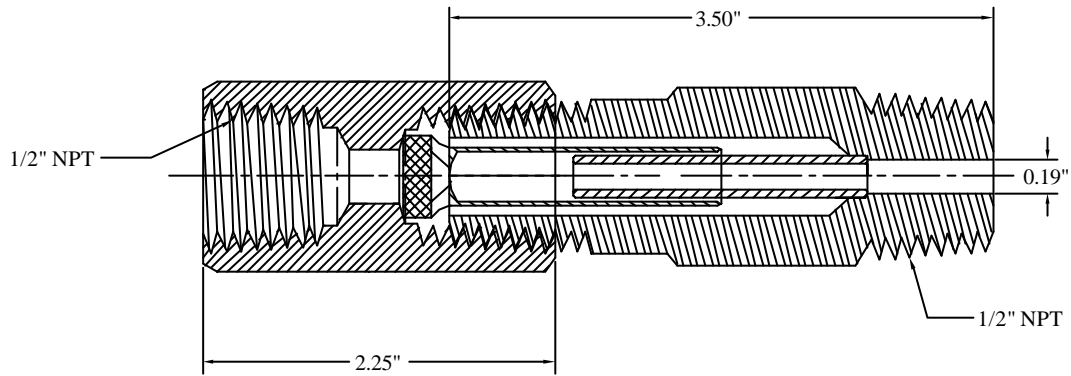
PART NO.	MATERIAL
ATRF - STD - 316 - 001	316 SS
ATRF - CSP- 316 - 001	C.S NICKEL PLATED

PROJECT/CLIENT
TITLE
TRANSMITTER OVAL ADAPTOR FLANGE
This drawing is the property of Aura Inc. Unauthorised reproduction is prohibited.

**Aura Inc.**  
D11/3,OKHALA IND. AREA,  
PHASE II, NEW DELHI  
INDIA.  
www.aurainc.com

DRG NO : ATRF - STD - 001

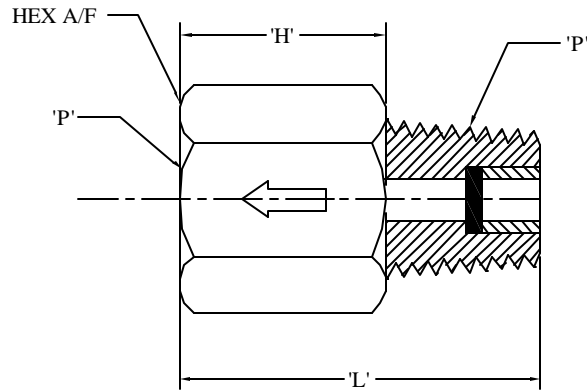
REV.	REASON FOR ISSUE	DATE	DRN.	CHKD.
0.00	PRELI. REL.	12.03.02	D.K.D.	G.G.A
1.00	REL. FOR MANU.	16.07.02	D.K.D.	G.G.A



ALL DIMENSIONS ARE IN INCHES.

<b>PROJECT/CLIENT</b>		<b>Aura Inc.</b> D11/3,OKHALA IND. AREA, PHASE II, NEW DELHI INDIA. www.aurainc.com
<b>TITLE</b>		
BARREL SYPHON		
<b>MATERIAL</b>	<b>PART NO: ABS-STD-316-001</b>	<b>DRG NO : ABS - STD -001</b>
316 SS	This drawing is the property of Aura Inc. Unauthorised reproduction is prohibited.	

REV.	REASON FOR ISSUE	DATE	DRN.	CHKD.
0.00	PRELIM.REL.	12.03.01	D.K.D.	G.G.A
1.00	REL. FOR MANU.	12.06.01	D.K.D.	G.G.A



<b>PART NO. BUILD UP</b>
<b>APGS: AURA PRESSURE GAUGE SNUBBER</b>
<b>XX: SIZE ,04= 1/4"NPT ,08= 1/2"NPT</b>
<b>XXX: MATERIAL 316 SS , BRASS</b>
<b>X: TYPE OF FILTER . 'A' FOR AIR+ GAS USE,'B' FOR LIQUID USE</b>
<b>TYPICAL PART NO: APGS - 04 - 316 - A</b>

ALL DIMENSIONS ARE IN INCHES.

LENGTH 'L'	THREAD 'P'	'H'	HEX A/F
1.376"	1/4"NPT	0.812	3/4"
1.750"	1/2"NPT	1.00	1-1/16"
<b>MATERIAL: 316 SS / BRASS</b>			

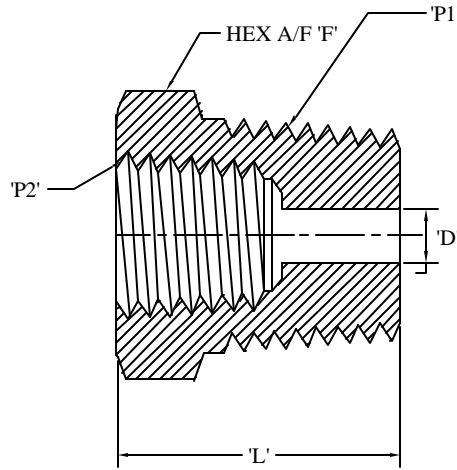
<b>PROJECT/CLIENT</b>
<b>TITLE</b>
<b>SNUBBER</b>
This drawing is the property of Aura Inc. Unauthorised reproduction is prohibited.

**Aura Inc.**  
D11/3,OKHALA IND. AREA,  
PHASE II, NEW DELHI  
INDIA.  
[www.aurainc.com](http://www.aurainc.com)

**DRG NO :APGS - STD - 001**



REV.	REASON FOR ISSUE	DATE	DRN.	CHKD.
0.00	PRELIM. REL.	12.03.00	D.K.D.	G.G.A
1.00	REL. FOR MANU.	15.09.00	D.K.D.	G.G.A



PART NO.	THREADS (P1) X (P2)	LENGTH 'L'	BORE 'D'	HEX A/F 'F'
ARB - 4 - 2	1/4" X 1/8"	1.06	0.28	9/16"
ARB - 6 - 2	3/8" X 1/8"	0.86	0.34	11/16"
ARB - 6 - 4	3/8" X 1/4"	1.19	0.38	3/4"
ARB - 8 - 2	1/2" X 1/8"	1.08	0.34	7/8"
ARB - 8 - 4	1/2" X 1/4"	1.08	0.45	7/8"
ARB - 8 - 6	1/2" X 3/8"	1.41	0.47	7/8"
ARB - 12 - 2	3/4" X 1/8"	1.08	0.45	1-1/16"
ARB - 12 - 4	3/4" X 1/4"	1.08	0.45	1-1/16"
ARB - 12 - 6	3/4" X 3/8"	1.08	0.59	1-1/16"
ARB - 12 - 8	3/4" X 1/2"	1.63	0.62	1-1/16"
ARB - 16 - 8	1" X 1/2"	1.37	0.73	1-3/8"
ARB - 16 - 12	1" X 3/4"	1.85	0.88	1-3/8"

ALL DIMENSIONS ARE IN INCHES.

<b>PROJECT/CLIENT</b>	<p style="text-align: center;"><b>Aura Inc.</b> D11/3,OKHALA IND. AREA, PHASE II, NEW DELHI INDIA. <a href="http://www.aurainc.com">www.aurainc.com</a></p>
<b>TITLE</b>	
<b>REDUCING BUSHES</b>	
This drawing is the property of Aura Inc. Unauthorised reproduction is prohibited.	
<b>DRG NO : ARB-STD-001</b>	

# **SECTION III QUALITY**

## **TOTAL QUALITY PROGRAM TYPICAL QUALITY PLAN**

The Total Quality Management System employed by Aura Inc. covers all aspects of Engineering, Documentation, Production Planning, Incoming Inspection, Stage Inspection, Final Product Inspection, Packing & Dispatch. The system ensures appropriate action in our Customer Service, Engineering and Manufacturing divisions, to produce and maintain adequate documentation and inspection systems capable of producing evidence that material or services conform to the specified requirements, through all stages of the company's operations.

Total Quality Management at Aura Inc. is an on-going process that is constantly upgraded and monitored to keep pace with the company's growth rate and diversification plans.

The Quality Program includes, but is not limited to, the following areas:

- Standard Operating Procedures and standard formats to ensure high degree of accuracy in interpreting and responding to client requirements for technical information and quotations.
- Order entry and production planning systems ensure that client orders are entered and processed with a clear understanding of client requirements so that the final product conforms to the Purchase Order requirements by way of product specifications and delivery.
- Documentation control and conformance to international standards & practices ensures a high degree of accuracy and quality of Engineering.
- Supervision of quality procedures at sub vendor's works to ensure that incoming materials are processed and manufactured to Aura's purchase specifications, thus ensuring that final production plans are on schedule.
- Quality plans for individual products covering all aspects of incoming, stage & final inspection including parameters to be checked, reference documents, methods of checking, instruments used, frequency of checking, format of recording and person responsible.
- Standard & procedures for packing and standard dispatch documentation ensure that products are adequately packed for the mode of shipment and documentation is accurate and meet requirements of client purchase orders, airlines/ shipping line & customs at the ports of dispatch and entry.

# AURA

# TYPICAL QUALITY PLAN

COMPONENT CATEGORY OR OPERATION	PARAMETER	REFERENCE DOCUMENT	METHOD OF CHECKING	INSTRUMENTS USED	FREQUENCY OF CHECKING	FORMAT OF RECORDING	RESPONSIBILITY
1) Raw Material	Material Com-position	Specification Standard /	Chemical Analysis	Chemical Lab./ Spectroscope	Sample	Material Test Report	Engineer
	<u>Hardness</u>	- As above -	Hardness Test	Hardness Testing Machine	- As above -	Inspection Report	- As above -
	<u>Dimensions</u>	Specification	Measurement	Vernier Micrometer	Sample to 100%	- As above -	- As above -
	<u>Visual Check :</u> a) Form b) Finish		Physical	----	- As above -	- As above -	- As above -
2) Machined Components	<u>Dimensions</u> Length Diameter Concentricity Flatness Angle Radius Parallelism Int. Threads Ext. Threads	Relevant Drawing Specification /	Measurements	Vernier Micrometer P. P. Gauge Dial Gauge Feeler-Gauge Angle-Protector Radius - Gauge Thread Ring Gauge Thread Plug Gauge	Sample to 100 %	Inspection Report	Engineer
	<u>Visual Check :</u> a) Form b) Finish	- As above -	Physical		- As above -	- As above -	- As above -

# AURA

# TYPICAL QUALITY PLAN

COMPONENT CATEGORY OR OPERATION	PARAMETER	REFERENCE DOCUMENT	METHOD OF CHECKING	INSTRUMENTS USED	FREQUENCY OF CHECKING	FORMAT OF RECORDING	RESPONSIBILITY
3) Assembled Components	Dimensions	Relevant Drg./ Specs.	Measurements	Vernier Special gauges	Sample to 100%	Inspection Report	Engineer
	<u>Visual Test</u> : a) Form b) Finish	---	Physical	---	- As above -	- As above -	- As above -
	<u>Pressure Rating</u>	Relevant Drg./ Specifications	Pneumatic Pressure Test	Pressure gauges Compressed air & Fixtures	Sample	Test Report	Engineer / Agency
			Hydraulic Test	Hydraulic pump set & fixtures	- As above -	- As above -	- As above -
			Pressure Impulse & Vibration test	Hydraulically operated pressure impulse generator and Fixtures	- As above -	- As above -	- As above -
			Make & break Hydrostatic Test	Hydraulic pump set and fixtures	- As above -	- As above -	- As above -
			Temperature Cycling test	Hydraulic pump set oven and fixtures	- As above -	- As above -	- As above -
			Helium leak test	Helium Gas cylinder Rotameters and Fixtures.	- As above -	- As above -	- As above -

# AURA

# TYPICAL QUALITY PLAN

COMPONENT CATEGORY OR OPERATION	PARAMETER	REFERENCE DOCUMENT	METHOD OF CHECKING	INSTRUMENTS USED	FREQUENCY OF CHECKING	FORMAT OF RECORDING	RESPONSIBILITY
<b>4) Finish</b>	<u>Electroplating</u>	Relevant Specifications	Physical	---	Sample to 100%	Inspection Report	Engineer
	<u>Ultrasound Cleaning</u>	- As above -	- As above -	---	- As above -	- As above -	- As above -
	<u>Corrosion Resistance</u>	- As above -	a) Wet-towel test b) Corrosion Resistance test	Wet-towel Salt Chamber	Sample - As above -	- As above - - As above -	- As above - - As above -
<b>5) Packing</b>	<u>Identification</u>	- As above -	Physical	Relevant Identification tag	100%	- As above -	- As above -

**SECTION IV**  
**CERTIFICATES**

ISO CERTIFICATE



# CERTIFICATE

The TÜV CERT Certification Body  
for QM Systems of RWTÜV Systems GmbH

hereby certifies in accordance with TÜV CERT  
procedure that



**AURA INC.**

Head Office : W-167(A), Greater Kailash – II, New Delhi – 110 048  
Works : D-11/3, Okhla Industrial Area, Phase – II,  
New Delhi – 110 020, India

has established and applies a quality system for

**Manufacture and supply of Instrument Fittings, Valves and Manifolds,  
Temperature Sensing Accessories and Precision Turned Components**

An audit was performed, Report No. **2.5-1463/2001**

Proof has been furnished that the requirements according to  
**ISO 9001 : 2000**

are fulfilled. The certificate is valid until **30 October 2007**

Certificate Registration No. **04100 2001 1698 – E3**

The company has been certified since **2001**



Essen, 10.12.2004



The TÜV CERT Certification Body for QM Systems  
of RWTÜV Systems GmbH



## **NORTH AMERICA**

### **US Corporate Head Quarters**

#### **Aura Inc.**

3000 Bridge Parkway, Suite 101  
Redwood Shores, CA 94065, USA  
Voice: (650) 575 9672  
Email : corporateoffice@aurainc.com

### **Sales & Distribution – North America**

#### **Aura Inc.**

1146, Oakengate Road  
San Dimas, CA 91773-3856, USA  
Voice: (909) 592 1102  
Fax: (909) 394 1915  
Toll Free: 1-877-AURAINC  
Email: sales@aurainc.com

## **ASIA**

### **Corporate Head Quarters**

#### **Aura Inc.**

W-167 (A), Greater Kailash -II  
New Delhi - 110 048, INDIA  
Voice: +91-11-41639515 / 16  
Fax: +91-11-29210761  
Email: corporateoffice@aurainc.com

### **Engineering, Manufacturing & International Sales**

#### **Aura Inc.**

D-11/3, Okhla Industrial Area,  
Phase-II, New Delhi – 110020  
Voice: +91-11-55606848 / 49  
Email: worldwidesales@aurainc.com

## **EUROPE**

#### **Aura Inc.**

Via Vertoiba 4  
20137 Milano, Italy  
Telefax: +39 02 550 14360  
Mobile : +39 335 664 7752  
Email: auraitaly@aurainc.com

[www.aurainc.com](http://www.aurainc.com)